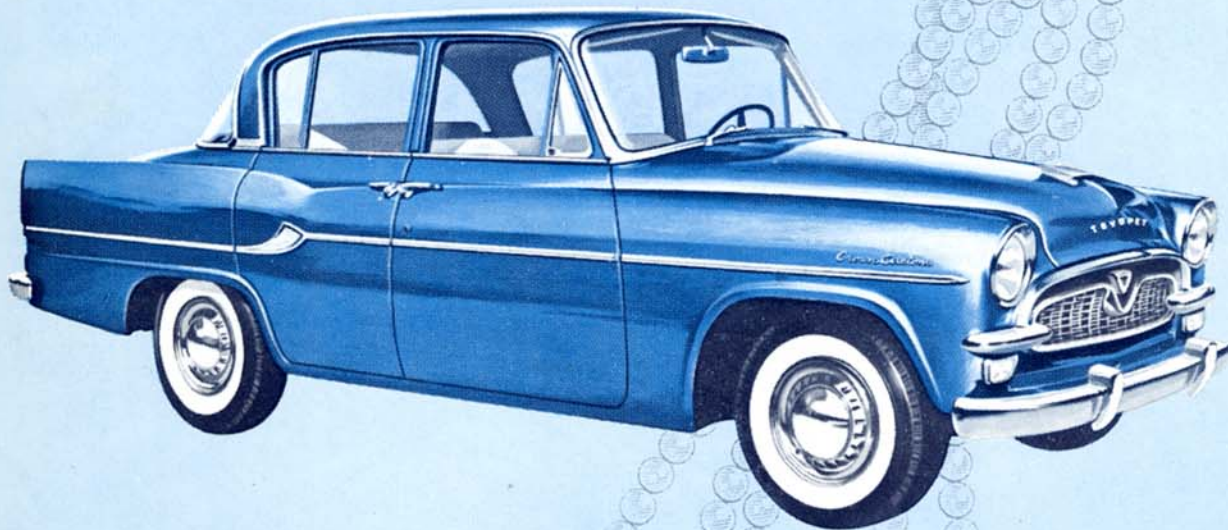


VALUE

The measure of value for 1959 has already been set: room and comfort plus economy. Toyopet offers four-door entry convenience...the comfortable ride of a big car...and still, Toyopet is inexpensive to operate and maintain. This is value unattained in any other automobile...regardless of price.

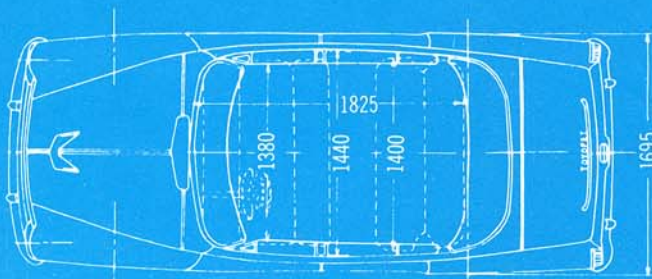
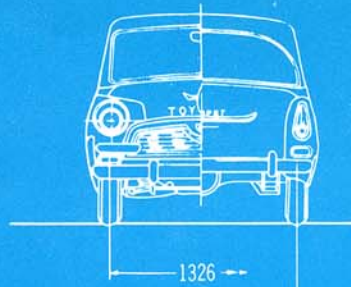
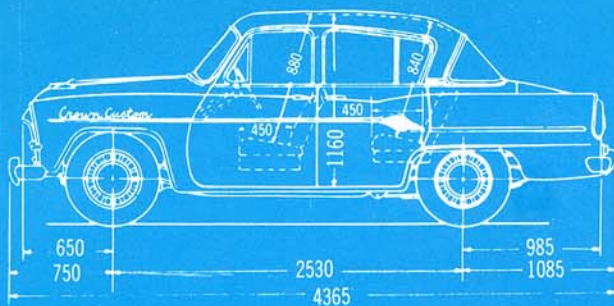
WORLD'S GREATEST AUTOMOTIVE VALUE



TOYOPET

CROWN CUSTOM
SEDAN FOR

59



SPECIFICATIONS

MODEL Toyopet Model RS22L

VEHICLE WEIGHT 1,194kg (2,630lb.)

SEATING CAPACITY 6

DIMENSIONS:

- Length, overall 4,365mm (171.9in.)
- Width, overall 1,695mm (66.8in.)
- Height overall 1,529mm (60.2in.)
- Wheelbase 2,530mm (99.6in.)
- Tread, front 1,326mm (52.2in.)
- Tread, rear 1,370mm (53.94in.)
- Ground clearance 168mm (7.4in.)
- Standard body size:
- Length, interior 1,825mm (71.9in.)
- Width, interior 1,440mm (56.7in.)
- Height, interior 1,160mm (45.7in.)

PERFORMANCE:

- Maximum speed 122km/h (75 MPH)
- Grade ability 39%
- Minimum turning radius 5,500mm (18.0 ft.)
- Braking distance (at 50km/h) 14m (45.5 ft.)
- Fuel consumption 15km/lt.

ENGINE:

- Type: Gasoline engine, 4-cycle, overhead valve.
- No. of cylinders 4
- Bore and stroke 77 x 78mm (3.03 x 3.07in.)
- Displacement 1,453c.c. (88.67 cu. in.)
- Compression ratio 8.0
- Maximum gross B.H.P. 65 HP/4,500 r.p.m.
- Maximum gross torque 11.6kg-m/3,000 r.p.m.
(83.6 ft.-lb./3,000 r.p.m.)
- Engine service weight 150 kg (excluding clutch)

FUEL SYSTEM: Diaphragm-type fuel pump driven from camshaft.
Gasoline filter, 47lt. (12.5 U.S. gal.) tank.

CARBURETOR: Down draft, two-barrel type.

AIR CLEANER: Dry type with replaceable filter paper element.

LUBRICATION SYSTEM: Full-pressure feed to all main and connecting rod bearings, camshaft and timing gears. Gear-type, gear-driven oil pump. Specially treated paper oil filter. Oil pan capacity 3.5 lt. (3.7 U.S. qt.)

COOLING SYSTEM: Centrifugal pump circulation, fin-and-tube, pressure type radiator. Pump driven by V-type fan belt. Bellows-type thermostat. Capacity, 9.1 lt. (9.5 U.S. qt.)

ELECTRICAL SYSTEM: 12-volt system. Generator rating 216 W, starter motor 12-volt, 55 A.H. battery.

FRAME: Girder type, closed box section.

CLUTCH: Single dry plate with rubber torsion dampers. Pedal is of hydraulic type. Diameter, 200mm. (7.87 in.)

TRANSMISSION: 3 speed forward and 1 reverse, synchro-mesh second, and top speeds. Steering column shift. Gear ratios: First, 3.647; second, 1.807; top 1.000; reverse, 4.863.

STEERING GEAR: Hindley worm and sector-roller type. Gear ratio, 20.

AXLE, FRONT: Wishbone type. Independent suspension.

AXLE, REAR: Semi-floating, banjo housing. Heat-treated chrome molybdenum steel axle shafts. Differential bearings are tapered rollers. Hypoid gear. Hotchkiss drive system. Gear ratio: 4.875.

BRAKE, SERVICE: 4-wheel, hydraulic, internal-expanding type. Double cylinder front brakes.

BRAKE, PARKING: Mechanical internal-expanding type, acting on rear wheels.

SPRINGS, FRONT: Coil x 16.8 x 120 (Wire diam. x coil diam.)

SPRINGS, REAR: Semi-elliptic, 3 leaves.
1,300 x 80 x 7mm - 1 leaf (51.18 x 3.15 x 0.28 in.)
1,300 x 80 x 6mm - 2 leaves (51.18 x 3.15 x 0.28 in.)

SHOCK ABSORBERS: Double acting, tubular type, 2 each on front and rear.

TIRE SIZE: 6.40 x 13, 4-ply.

NOTE: Manufacturer reserves the right to make any changes or improvements without previous notice.